

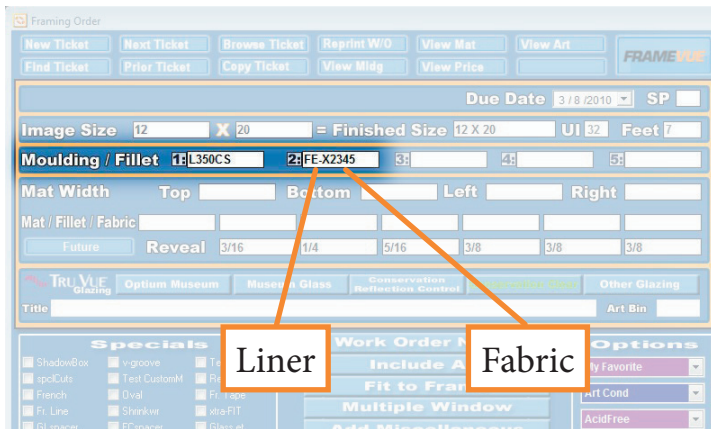


FABRIC PRICING THROUGH LIFESAVER

LifeSaver can now do the work of calculating fabric prices for you - making your Framing Order Screen even more versatile. Whether you are planning to purchase fabric from a framing fabric vendor and wrap the mat yourself, order a pre-wrapped mat, a wrapped liner moulding, or a liner moulding custom wrapped without seams, LifeSaver will help you document and price your job correctly. Fabric is traditionally priced with an awareness of bolt width and grain, and a 2-inch wrap allowance is typically recommended. LifeSaver will automatically let you know if you try to price a job that will not fit on the bolt width, either due to the 2-inch allowance or the grain of the fabric selected.



FABRIC COVERED LINERS



1. List mouldings in LifeSaver as usual, in order from outermost to innermost.
2. Enter the liner and fabric information into the same moulding field without spaces:

- Liner profile (E.g. FE-X)
- Fabric item number (E.g. 2345)



LifeSaver Framing Order Screen

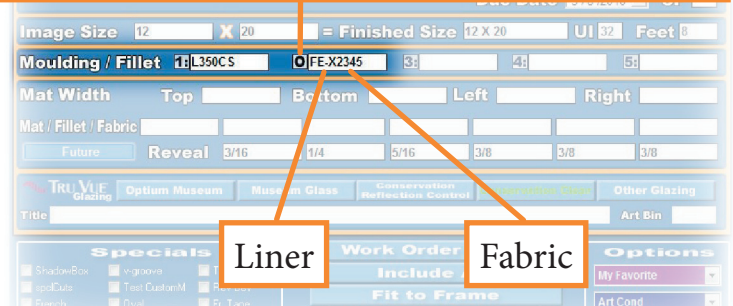
FABRIC COVERED LINERS - NO SEAMS / CONTINUOUS

1. Enter the liner and fabric information as described in the previous section
2. Click the gray numbered square just to the left of the moulding a few times to cycle to the letter "O" (The letters are, for instance, L/C/J/O, meaning Length/Chop/Join/Other.)

The "O" for "Other" represents No Seams or Continuous Covered.

Note: This is the same treatment with different names, depending on which vendor is chosen.

Click a few times to cycle to the "O" for Other



LifeSaver Framing Order Screen

FABRIC COVERED MATS - VENDOR WRAPPED

Enter the Vendor-wrapped Mat item number on the Mat/Fillet/Fabric line. (E.g. FFE-2345-8)

*Note: These items will be listed in the Mats Database, (**Mats** button from the Main Menu Screen)
The Fabric Options window will not appear.*

FABRIC COVERED MATS - FRAMER WRAPPED

1. Enter the Fabric item number on the Mat/Fillet/Fabric line. (E.g. FFE-2345)
2. Tab or click to the next field to cause the Fabric Options window to appear
3. Click to place a checkmark in the checkbox next to the appropriate option:

“Use a mounting board”

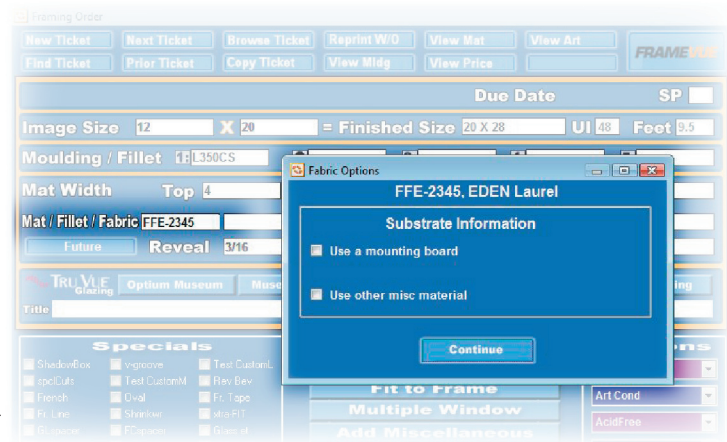
- Allows user to select desired mounting material
- LifeSaver prices accordingly based on size

“Use other misc material”

- Allows user to utilize fallouts or other on-hand materials
- Enter the price in the blank provided

4. Click **Continue** to proceed, noting pricing updates in the Fabric (and Mounting) field(s) in the Totals area

Fabrics are measured and priced by the yard

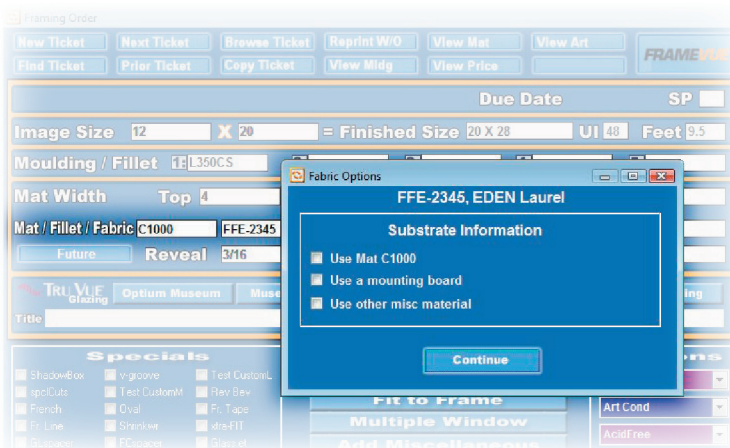


LifeSaver Framing Order Screen

LifeSaver rounds up to the nearest 1/4, 1/3, or 1/2 yard

*Note: These items will be listed in the Fabrics Database.
(Select the File menu, then Fabrics from the Main Menu Screen.)*

FABRIC COVERED MATS - USING A SPECIFIC SUBSTRATE MAT



LifeSaver Framing Order Screen

1. Enter the specific substrate Mat item number in the Mat/Fillet/Fabric line
2. In the very next field on the Mat/Fillet/Fabric line, enter the desired Fabric
3. The Fabric Options window will appear
4. Choose the option that indicates the mat number that you entered in the previous field

Note: The substrate mat will be priced as a regular mat in this case.